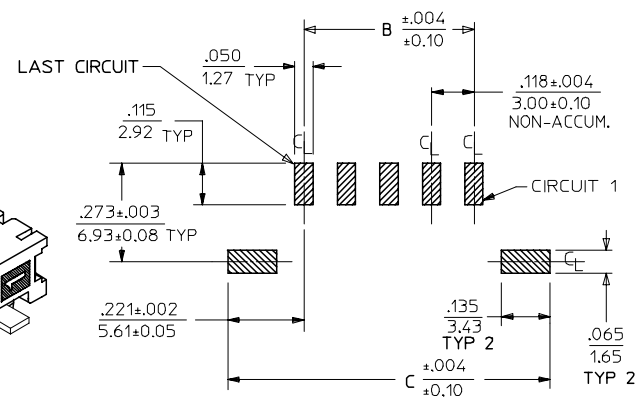
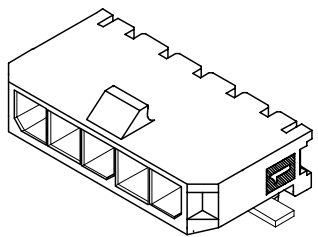
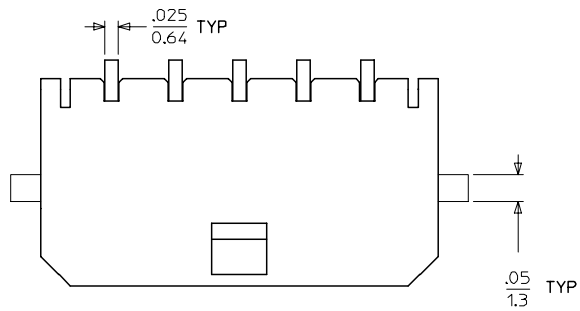
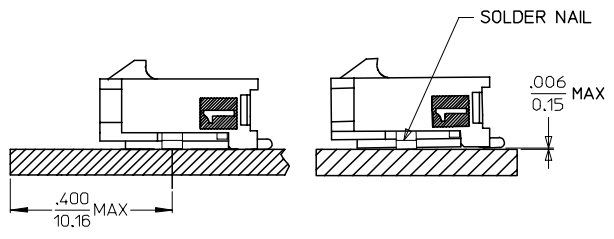
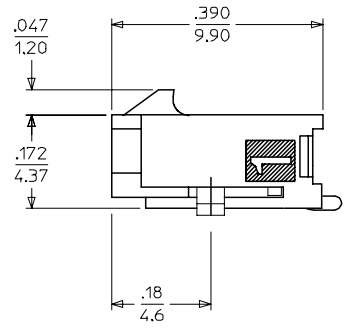
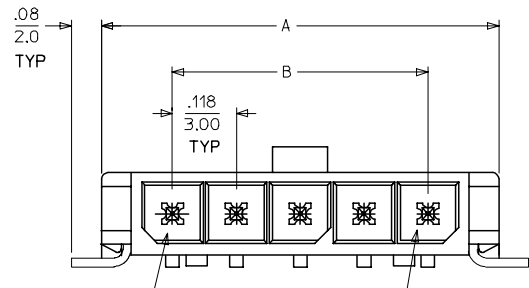


13 12 11 10 9 8 7 6 5 4 3 2 1



| CKTS | A | B | C |
|------|----------------|----------------|----------------|
| 2 | .380 9.65 | .118 3.00 | .559 14.20 |
| 3 | .498 12.65 | .236 6.00 | .677 17.20 |
| 4 | .616 15.65 | .354 9.00 | .795 20.20 |
| 5 | .734 18.64 | .472 12.00 | .913 23.20 |
| 6 | .852 21.64 | .591 15.00 | 1.031 26.20 |
| 7 | .970 24.64 | .709 18.00 | 1.150 29.20 |
| 8 | 1.088 27.64 | .827 21.00 | 1.268 32.20 |
| 9 | 1.206 30.63 | .945 24.00 | 1.386 35.20 |
| 10 | 1.325 33.66 | 1.063 27.00 | 1.504 38.20 |
| 11 | 1.443 36.65 | 1.181 30.00 | 1.622 41.20 |
| 12 | 1.561 39.65 | 1.299 33.00 | 1.740 44.20 |

PCB LAYOUT: COMPONENT SIDE



LOCATION DETAIL
SEE NOTE #7

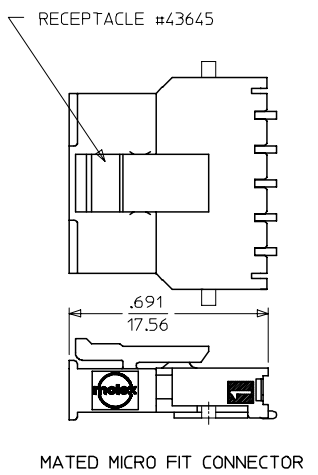
COPLANARITY DETAIL
SEE NOTE #6

NOTES:

CIRCUIT 1

- HOUSING MATERIAL: LIQUID CRYSTAL POLYMER, GLASS FILLED, UL94V-0, COLOR: BLACK
TERMINAL MATERIAL: BRASS ALLOY
- FINISH: A = .000100/(0.00254) MIN. BRIGHT TIN OVER .000050/(0.00127) MIN. NICKEL
B = .000015/(0.00038) MIN. SELECT GOLD IN CONTACT AREA .000100/(0.00254) MIN. SELECT MATTE TIN ON SOLDER TAILS BOTH OVER .000050/(0.00127) NICKEL OVERALL
C = .000030/(0.00076) MIN. SELECT GOLD IN CONTACT AREA .000100/(0.00254) MIN. SELECT MATTE TIN ON SOLDER TAILS BOTH OVER .000050/(0.00127) NICKEL OVERALL
- * THE PRIMARY SHIPPING CARTON WILL BE LABELED "COMPLIANT TO RoHS DIRECTIVE 2002/95/EC AND ELV ANNEX II OF DIRECTIVE 2000/53/EC." CARTONS WITHOUT THIS LABEL MAY CONTAIN PRODUCT WITH TIN/LEAD IN THE PC TAIL AREA.
- PRODUCT SPECIFICATION: PS-43650
- TAPE AND REEL PACKAGED : SEE MOLEX DRAWING PK-70873-07**
- MATES WITH MICRO FIT (3.0) RECEPTACLE SERIES 43645
- THE COPLANARITY DIMENSION IS ESTABLISHED BY PLACING THE ASSEMBLY ON A FLAT SURFACE. THE DISTANCE FROM THAT SURFACE TO THE BOTTOM OF ANY TERMINAL OR NAIL MUST NOT EXCEED .006/0.15
- TO AVOID INTERFERENCE BETWEEN RECEPTACLE AND PCB, HEADER MUST BE PLACED WITHIN .400/(10.16) MAX. FROM EDGE OF PCB, AS SHOWN IN LOCATION DETAIL.
- A HIGHER TEMPERATURE GRADE MATERIAL (260C MAX. REFLOW TEMPERATURE) IS BEING PHASED-IN BEGINNING AUGUST 2007. PARTS WILL BE TEMPORARILY IDENTIFIED WITH A BLUE DOT ON THE PRIMARY SHIPPING CARTON LABEL UNTIL ALL CIRCUIT SIZES ARE CONVERTED. AT WHICH TIME A FULL-CONVERSION DATE WILL BE IDENTIFIED IN PS-43650.

| CKTS | FINISH A | FINISH B | FINISH C |
|------|--------------|--------------|--------------|
| | MATERIAL NO: | MATERIAL NO: | MATERIAL NO: |
| 02 | 43650-0212 | 43650-0213 | 43650-0214 |
| 03 | 43650-0312 | 43650-0313 | 43650-0314 |
| 04 | 43650-0412 | 43650-0413 | 43650-0414 |
| 05 | 43650-0512 | 43650-0513 | 43650-0514 |
| 06 | 43650-0612 | 43650-0613 | 43650-0614 |
| 07 | 43650-0712 | 43650-0713 | 43650-0714 |
| 08 | 43650-0812 | 43650-0813 | 43650-0814 |
| 09 | 43650-0912 | 43650-0913 | 43650-0914 |
| 10 | 43650-1012 | 43650-1013 | 43650-1014 |
| 11 | 43650-1112 | 43650-1113 | 43650-1114 |
| 12 | 43650-1212 | 43650-1213 | 43650-1214 |



MATED MICRO FIT CONNECTOR

| | | | | | |
|------------------------------------------------------------------------------------------------------------------------------|------------------------------------------------------|----------------------------------------------------------------------------------------------------------------------------------------------------------------------|----------------------------------------------------------------------------------------------------------------------------------------------------------------------------|--------------------------------------------------------------|-------------------------------------------------------------------------------------------------------------------------------|
| ADD NOTES 7 AND 8 EC NO: UCP2008-0037 DRAWN: HK/PPER 2007/09/06 CHKD: SSOUSEK 2007/09/11 APPR: FSM/TH 2007/09/12 | QUALITY SYMBOLS ▽=0 ▽=0 | GENERAL TOLERANCES (UNLESS SPECIFIED) mm INCH 4 PLACES ± --- ± --- 3 PLACES ± --- ± .010 2 PLACES ± 0.25 ± .014 1 PLACE ± 0.36 ± --- ANGULAR ±1/2° | DIMENSION STYLE IN/MM DRAWN BY: SAMIEC DATE: 2000/07/07 CHECKED BY: MUELLER DATE: 2000/07/07 APPROVED BY: EDGLEY DATE: 2000/07/07 MATERIAL NO. DOCUMENT NO. | SCALE: --- DESIGN UNITS: METRIC THIRD ANGLE PROJECTION | MICRO FIT (3.0) SINGLE ROW / RIGHT ANGLE SMT / NAILS / REELS MOLEX INCORPORATED SD-43650-005 SHEET NO. 1 OF 1 |
| | DRAFT WHERE APPLICABLE MUST REMAIN WITHIN DIMENSIONS | | SEE CHART | | THIS DRAWING CONTAINS INFORMATION THAT IS PROPRIETARY TO MOLEX INCORPORATED AND SHOULD NOT BE USED WITHOUT WRITTEN PERMISSION |
| | | | | | |
| | | | | | |

12 11 10 9 8 7 6 5 4 3 2 1